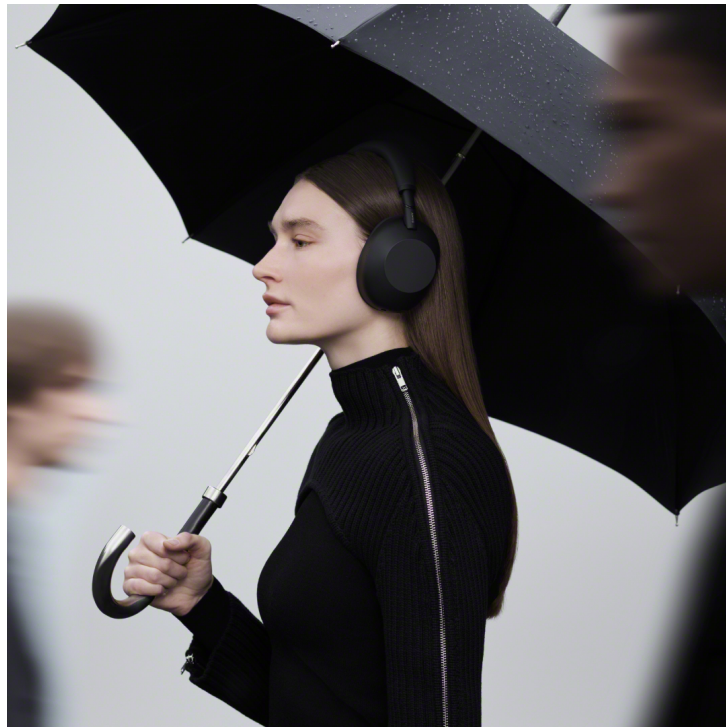


---

## Sony Middle East and Africa and Modern Home Introduce the Next Evolution of Noise Cancelling with the WH-1000XM6 in Qatar



Published on May 31, 2025

Document Date: Thu, Feb 19 2026 07:11:38 am

Category: ,English,Events - ,Snippets

Show on website : [Click Here](#)

---

- **Featuring Sony's most advanced noise cancelling yet – powered by a next-gen chip and intelligent algorithms – the WH-1000XM6 can block distractions before they reach you.**
- **Co-created with world-renowned mastering engineers, the WH-1000XM6 delivers studio-level precision.**
- **Cinema comes alive with 360 Reality Audio Upmix for Cinema.**
- **Ensure you are always heard with WH-1000XM6 ultra clear call quality – for any call.**

**(Doha, Qatar, 31 May 2025)** – Sony Middle East and Africa, the leading consumer electronics brand, alongside Modern Home, its strategic and exclusive partner in Qatar, announced the release of the [WH-1000XM6](#) wireless noise cancelling headphones – the latest edition of its award-winning 1000X series that set a new standard for premium audio and personal listening experiences.

Building on the legacy of the 1000X series, this latest model combines premium sound with the best noise cancelling in a seamless design to create an unparalleled audio solution for music lovers, fashionistas, travellers and professionals alike.

The new [WH-1000XM6](#) wireless noise cancelling headphones will be available soon at Modern Home in Al Maha Center on Salwa Road and Fnac stores in Lagoona Mall, Doha Festival City, and Place Vendôme, in addition to other major retailers in town.

## **The next evolution in noise cancellation**

Powered by an advanced processor and an adaptive microphone system, noise cancelling is optimised in real-time on the WH-1000XM6 so your world stays undisturbed and your sound stays pure. With processor speeds seven times faster than its predecessor, the HD Noise Cancelling Processor QN3 fine-tunes 12 microphones, which is 1.5 times more than its precursor the WH-1000XM5, in real-time, delivering a dramatic leap in noise cancelling and sound quality. The precise detection of the twelve optimally placed microphones allows the noise cancellation to adapt more precisely to fit you and your environment. Whether you are looking to block out noise on a busy commute or stay focused in the office, your sound experience will be seamless and powerful.

Sony's new Adaptive NC Optimiser delivers unmatched noise cancelling precision – adjusting to any form of external noise and air pressure. Plus, the specially designed driver unit is optimally tuned for enhanced noise cancellation.

Auto Ambient Sound mode is even better at adapting to your surroundings in real-time, balancing music and external sound. Multiple microphones filter noise or let in what matters: announcements, conversations, or the world around you. Adjust settings automatically or fine-tune them manually in the Sony|Sound Connect app.

## **Premium sound, co-created with the masters**

The WH-1000X6 headphones allow you to hear your music as it was meant to be. Developed in collaboration with world-renowned mastering engineers at three of the industry's top recording studios, Sterling Sound, Battery Studios and Coast Mastering the WH-1000XM6 refines every note for studio-level accuracy, delivering a superior music experience.

The collaborative team of Grammy-winning and Grammy-nominated engineers includes Randy Merrill (Sterling Sound), who has worked with the likes of Ed Sheeran; Chris Gehringer (Sterling Sound), known for his work with Rihanna and Lady Gaga; Mike Piacentini (Battery Studios), who has mastered tracks for Bob Dylan; and Michael Romanowski (Coast Mastering), whose portfolio includes Alicia Keys and the iconic Star Wars soundtracks for Episodes 4, 5 and 6.

The collaboration of these talented individuals led to the WH-1000XM6 delivering the artist's intended emotion, energy, and detail with remarkable precision.

The WH-1000XM6 headphones are engineered to perfection with the specially designed driver unit delivering clarity that feels almost tangible, and every detail comes through with precision.

The high rigidity carbon fibre composite material dome and uniquely developed voice coil structure bring out the subtleties in every frequency – so vocals sound richer, instruments feel

more defined, and every track carries more emotion.

The HD Noise Cancelling Processor QN3 features an advanced look-ahead noise shaper for improved D/A conversion, allowing the WH-1000XM6 to predict and optimise quantisation noise while responding quickly to sudden sound changes. This gives you clearer details, richer bass and a more natural listening experience.

The WH-1000XM6 supports High-Resolution Audio and High-Resolution Audio Wireless, thanks to LDAC, Sony's industry-adopted audio coding technology. In addition, using Edge-AI, DSEE Extreme™ upscales compressed digital music files in real time to restore high-range sound lost in compression.

The Sony|Sound Connect app makes it even easier to fine-tune your entertainment experience on the WH-1000XM6. When listening to music, you can dial in the perfect sound with the 10-band EQ or create a spacious feel with the Background Music Effect. Gamers can also enjoy the Game EQ, developed with Sony's expertise from its INZONE range to enhance sound quality for FPS gaming. For those watching movies on the go, the WH-1000XM6 also feature 360 Reality Audio Upmix for Cinema that brings a spatial sound experience just like you are in a movie theatre from 2ch stereo sound by Sony's unique upmix and 360 Spatial Sound technology.

## **Always be heard with the Ultra clear call quality**

The WH-1000XM6 allows you to enjoy clarity in every call. Intelligent beamforming isolates your voice from background noise, so you are always heard even when others are talking. If you need to mute you can do it instantly, via the button right on your headphones.

With the advanced six-microphone AI-based beamforming system, the WH-1000XM6 homes in on your voice while filtering out background noise, so every word comes through crystal clear even in chaotic environments.

The AI-optimised noise reduction algorithm suppresses background sound while isolating your voice. Beamforming microphones and precise voice pickup technology ensure every word is heard clearly.

## **Masterfully crafted for all-day comfort**

The familiar iconic design of the WH-1000X series has been taken to the next level with an elegant, soft-fit wider headband infused with vegan leather ensuring a pressure-free fit. The asymmetrical headband design makes it easy to identify the left and right sides with just a glance.

The earpads are designed for all-day wear thanks to stretchable material that provides a secure yet gentle fit to reduce pressure whilst blocking external noise.

Plus, the intuitive controls allow you to easily switch between noise cancelling, ambient sound and mic mute with tactile buttons and a responsive touch panel.

Inspired by products with handcrafted precision workmanship, the folding mechanism on the WH-1000XM6 is crafted using advanced metal injection for a seamless durable fold, while designed to slip seamlessly into bags and airplane pockets. The compact case now features a magnetic closure for easy access.

With three premium colours to suit your style, the WH-1000XM6 headphones are available in Black, Platinum Silver and Midnight Blue.

### **More Intuitive, Smarter than ever**

With WH-1000XM6 you can experience Scene-based Listening, a new intuitive feature that uses sensing technology to automatically play music according to your activity and adjust noise cancellation level based on your environment and location. Along with Quick Access and Scene-based Listening, you can effortlessly connect to the top music services including Amazon Music (via “Amazon Music Play Now”), Apple Music, Spotify (via “Spotify Tap”) and YouTube Music.

The WH-1000XM6 is ready for LE Audio, delivering ultra-low latency for flawless gaming and effortless access to broadcasts with Auracast™, with exceptional sound quality. The Multi-Point

and Auto Switch makes switching between devices seamless, so you are always connected without interruption.

The WH-1000XM6 allows you to listen and charge all at once. Need to keep going when the battery is low? Simply plug in the USB charging cable and keep listening to your favorite tunes.

On the go? Even quicker charging is possible, with three minutes giving you up to three hours of charge.

### **Partnership with global superstar Post Malone**

Sony partners with 9x Diamond-certified, GRAMMY® Award-nominated global icon Post Malone as part of Sony's "For The Music" audio brand campaign. As one of the most influential and genre-defying artists of his generation, Post Malone embodies the spirit of authenticity, creativity, and connection – values that lie at the core of Sony's approach to audio innovation.

### **Made with the environment in mind**

Sony has designed these headphones with the environment in mind. The **WH-1000XM6** packaging is made from 100% paper materials. We continue to advance the adoption of Sony's proprietary paper, Original Blended Material, for the packaging of our flagship headphone model, the 1000X series (the WF-1000XM5, WF-1000XM4, WH-1000XM5 and WH-1000XM6).



Original Blended Material is an environmentally conscious paper material made from bamboo, sugarcane fibres, and post-consumer recycled paper.

## **For The Music**

Sony established the brand platform “For The Music” for its premier consumer and professional audio products and services. With “For The Music,” Sony is affirming itself as the premier audio brand connecting music creators and consumers, aiming to create authentic music experiences and transcend emotion for fans by supporting the creator’s vision over everything.□

For more information visit: <https://www.sony-mea.com/en/electronics/headband-headphones/wh-1000xm6>